

Springfield Union Station

Project Update - December 2016

Work Completed and Underway

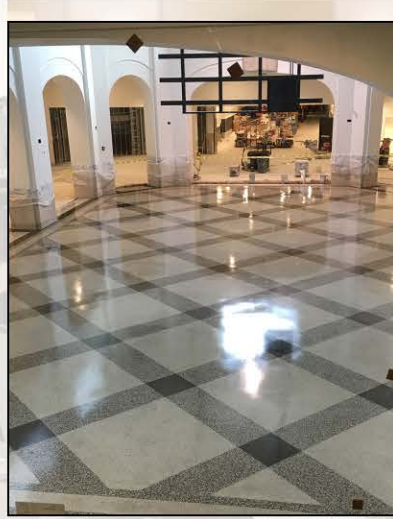
- Concourse Terrazzo floor repair and ceiling plastering are complete
- Restroom sink installation is complete
- Elevators 1, 2 and 3 installation is near completion
- Acoustic ceiling metal panel installation is near completion
- Landscaping is complete
- New Main Street Island line painting is complete
- Employee lot and Dwight street asphalt finish layers complete
- Bunting support and lighting is in progress in parking garage
- Garage signage is complete
- Finishes including lighting fixtures and receptacle outlets in progress
- Ceramic wall tile in tunnel is complete and floor tile is in progress



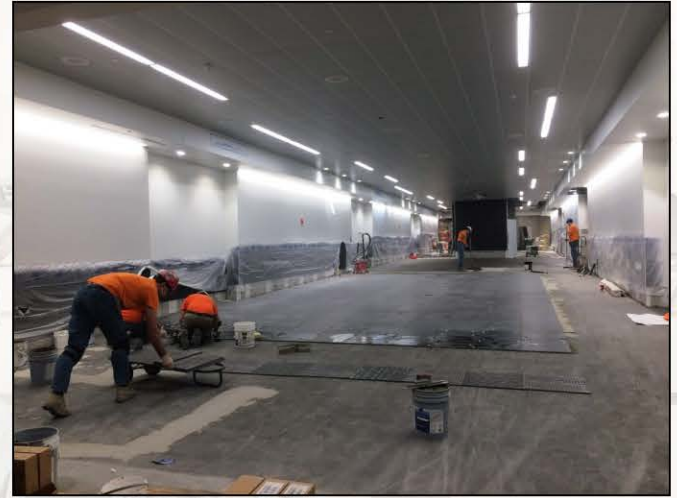
12/16 - The historic clock has been restored and installed and the Main Concourse is nearly complete



12/16 - Supports for the metal panels on the parking garage are installed



12/16 - View of the refurbished Terrazzo floor on the Concourse



12/16 - New floor tiles are installed in the tunnel

Upcoming Work

- Glass installation for ticketing counters
- Tunnel floor tile grouting and sealing
- HVAC Commissioning, elevator certifications, camera installation and final painting
- Completion of architectural metal panels and lighting on parking garage
- Elevator certification and camera installation in garage