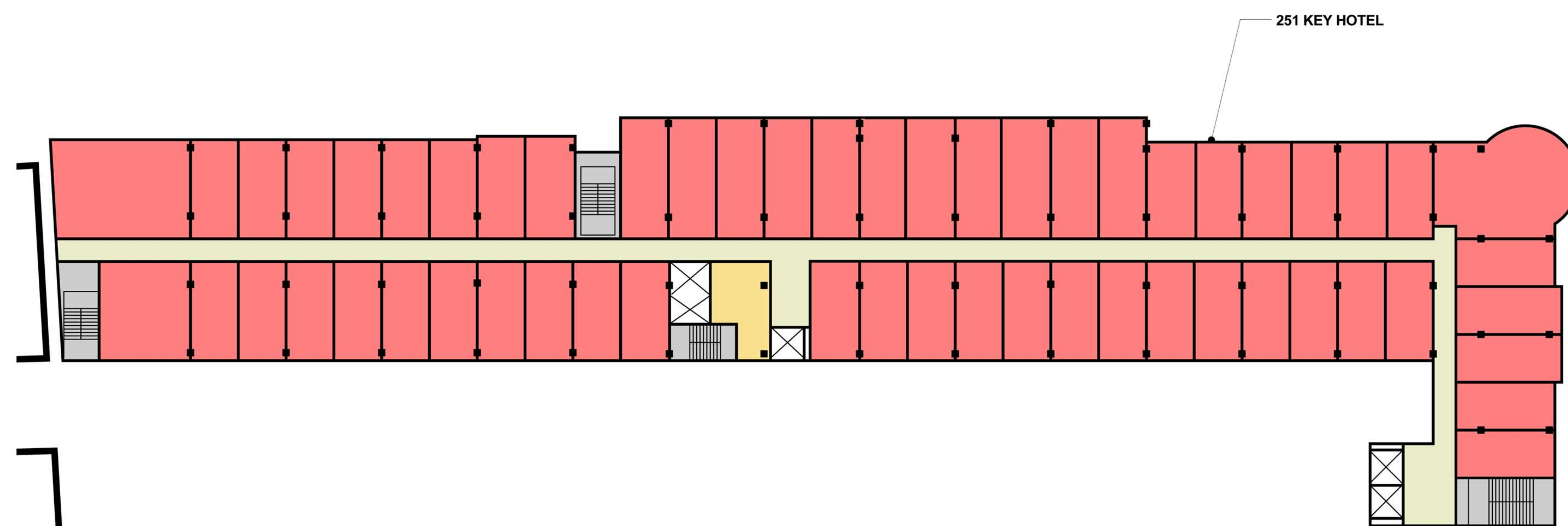
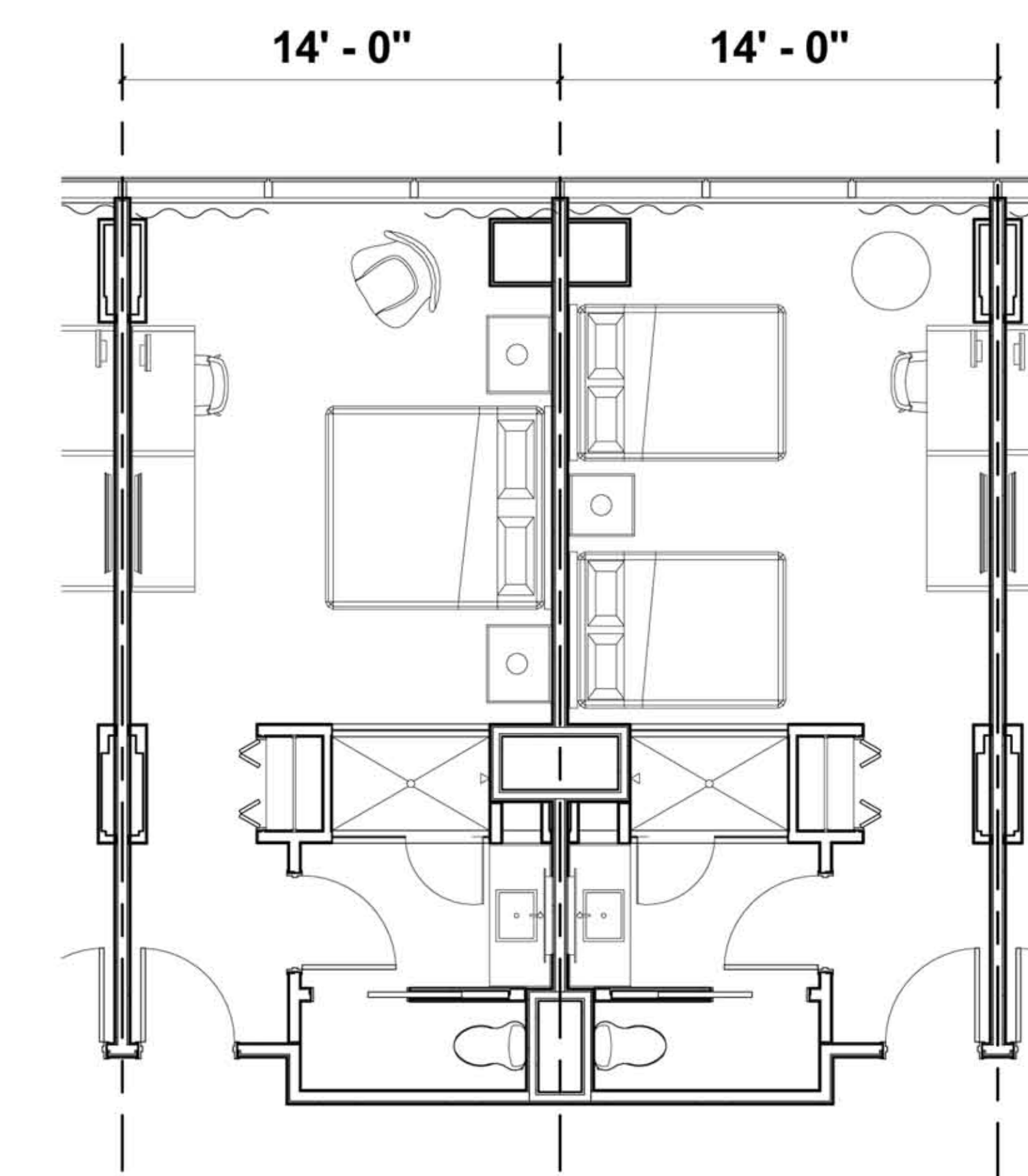


2B ENLARGED LEVEL 6 HOTEL FLOOR PLAN
1/16" = 1'-0"



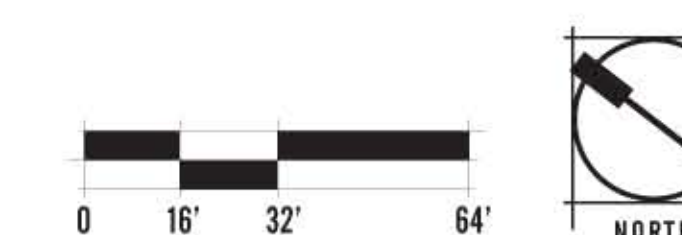
2D ENLARGED LEVELS 3, 4 AND 5 HOTEL FLOOR PLAN
1/16" = 1'-0"



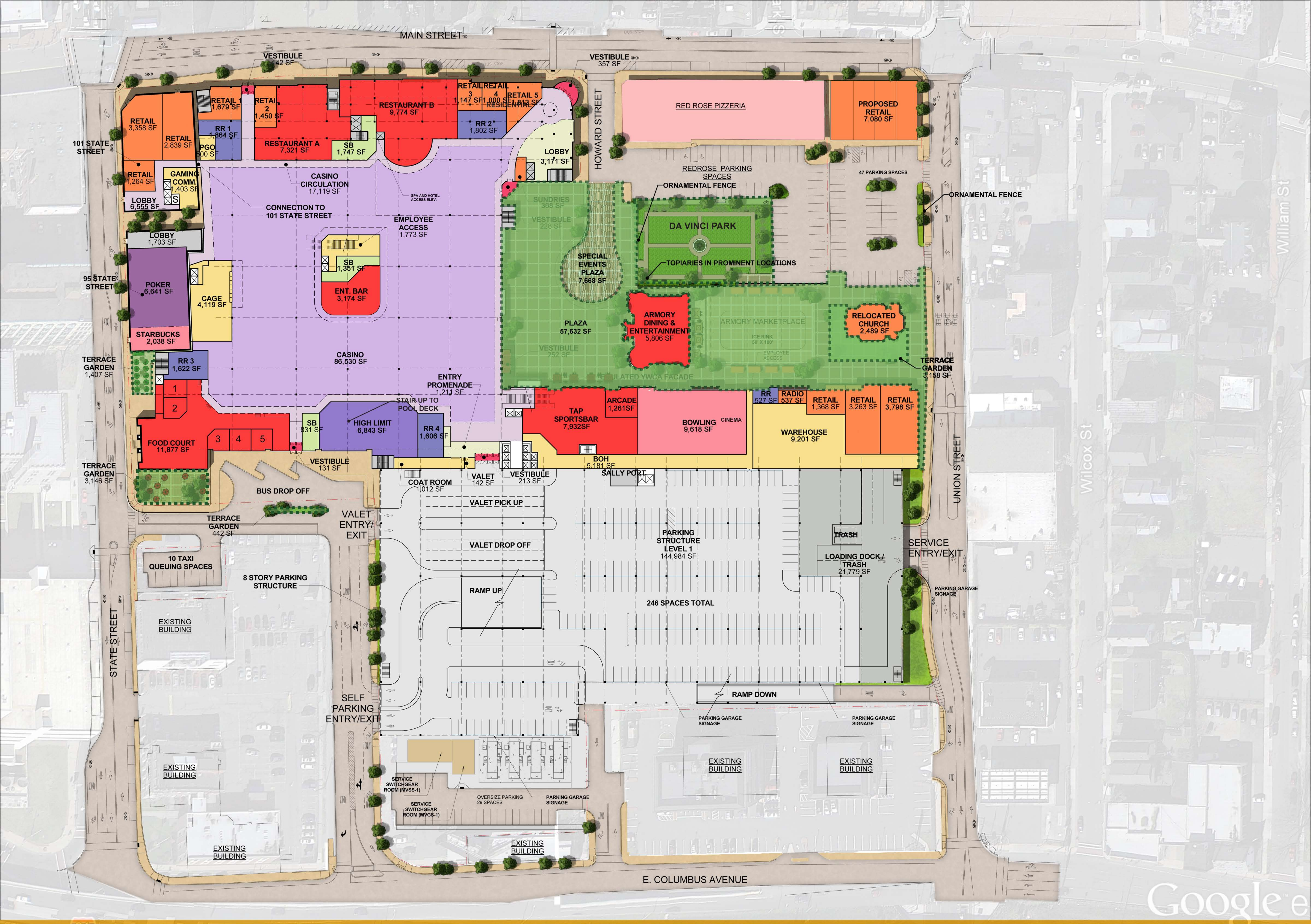
6D TYPICAL ROOM PLANS
1/4" = 1'-0"

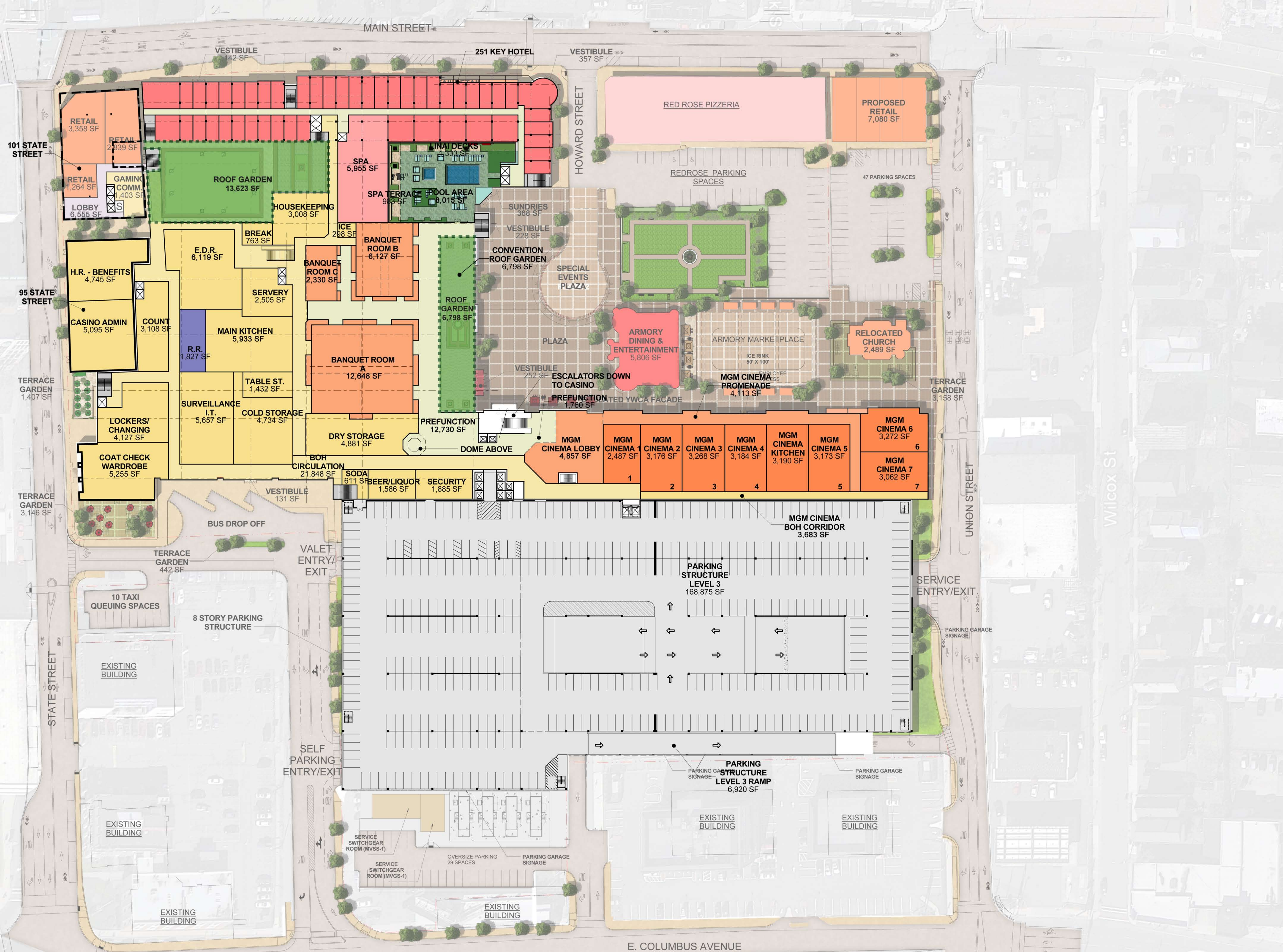
MGM SPRINGFIELD GUEST ROOM MATRIX

	1 BAY	1 BAY PLUS	2 BAY	2.5 BAY	TOTAL
LEVEL 2	27	11	7	2	2
LEVEL 3	42	11	1	2	2
LEVEL 4	42	11	1	2	2
LEVEL 5	42	11	1	2	2
LEVEL 6	29	6	0	1	1
TOTAL	182	50	10	9	251

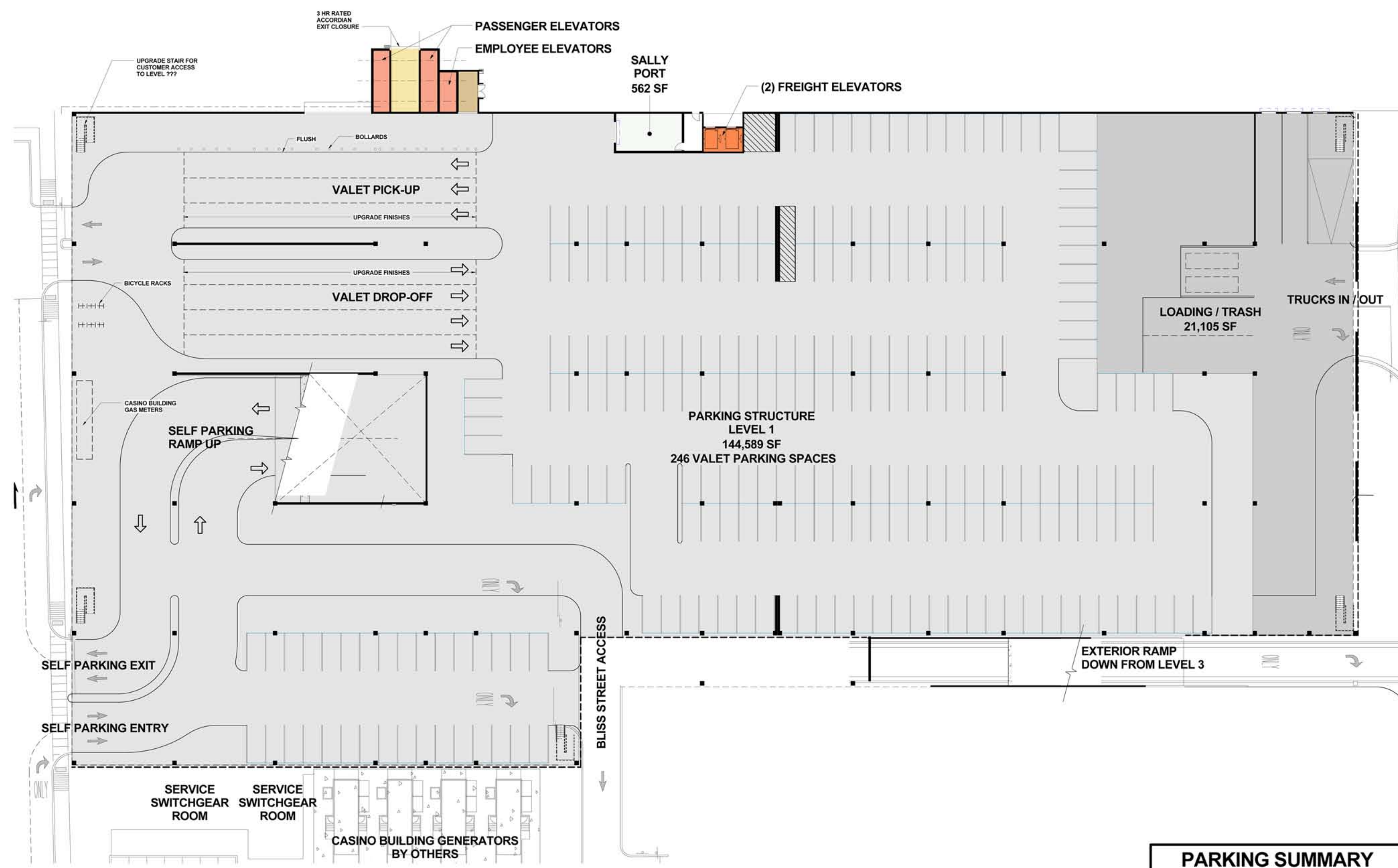






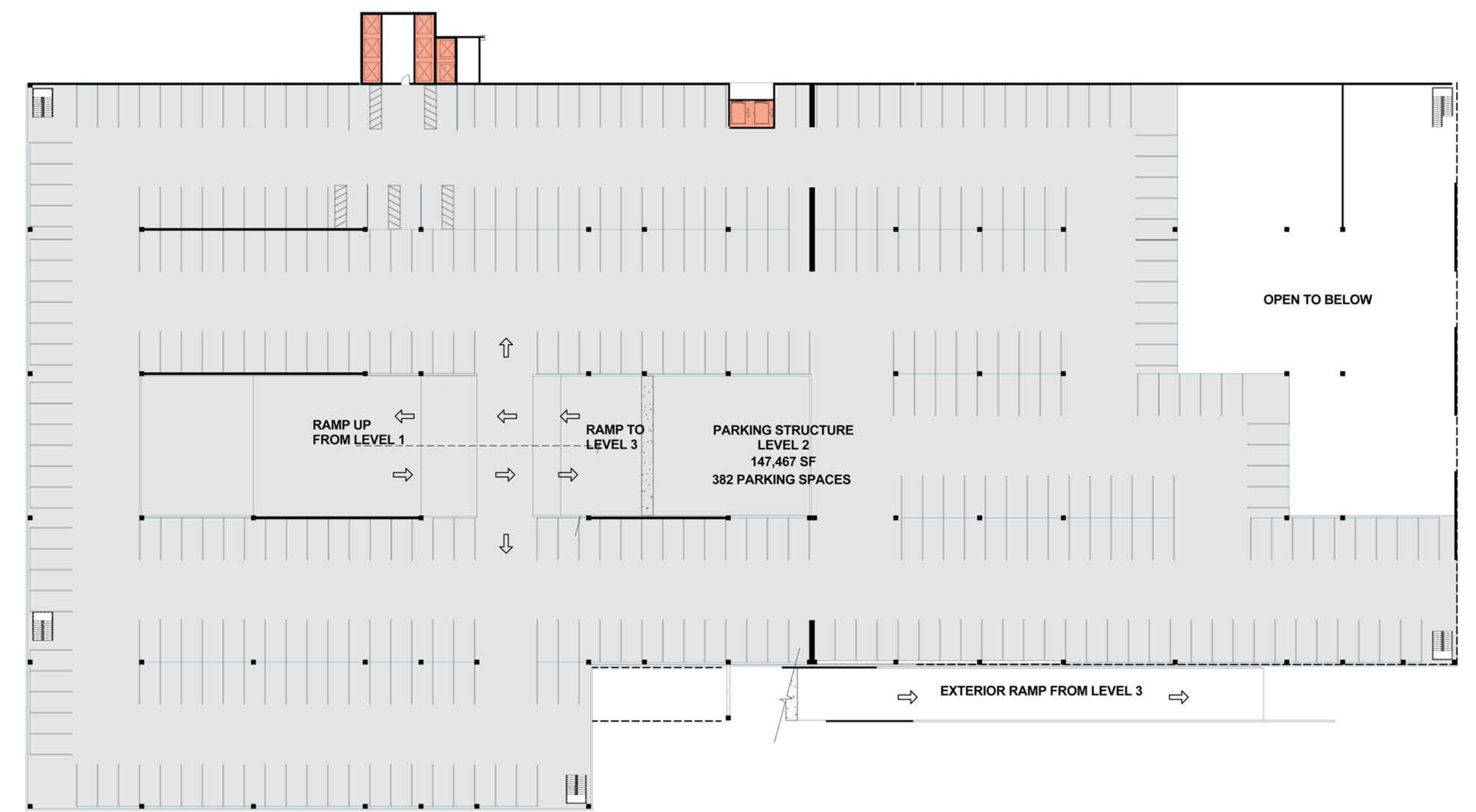


1 OVERALL LEVEL 2 FLOOR PLAN
1/32" = 1'-0"



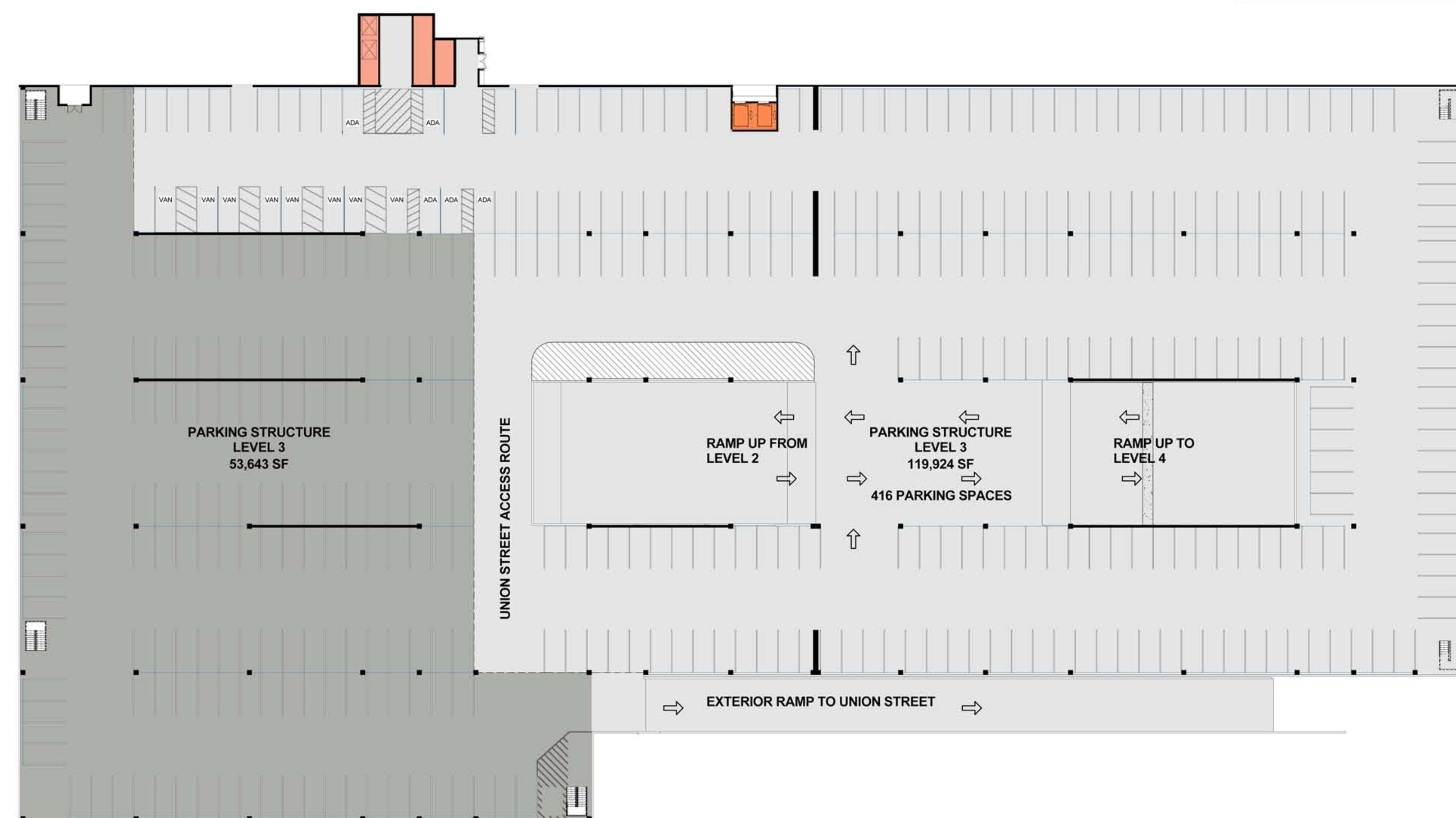
GARAGE LEVEL ONE

PARKING SUMMARY	
LEVEL 1	246 SPACES
LEVEL 2	382 SPACES
LEVEL 3	416 SPACES
LEVEL 4	461 SPACES
LEVEL 5	454 SPACES
LEVEL 6	453 SPACES
LEVEL 7	465 SPACES
LEVEL 8	498 SPACES
TOTAL	3,375 SPACES

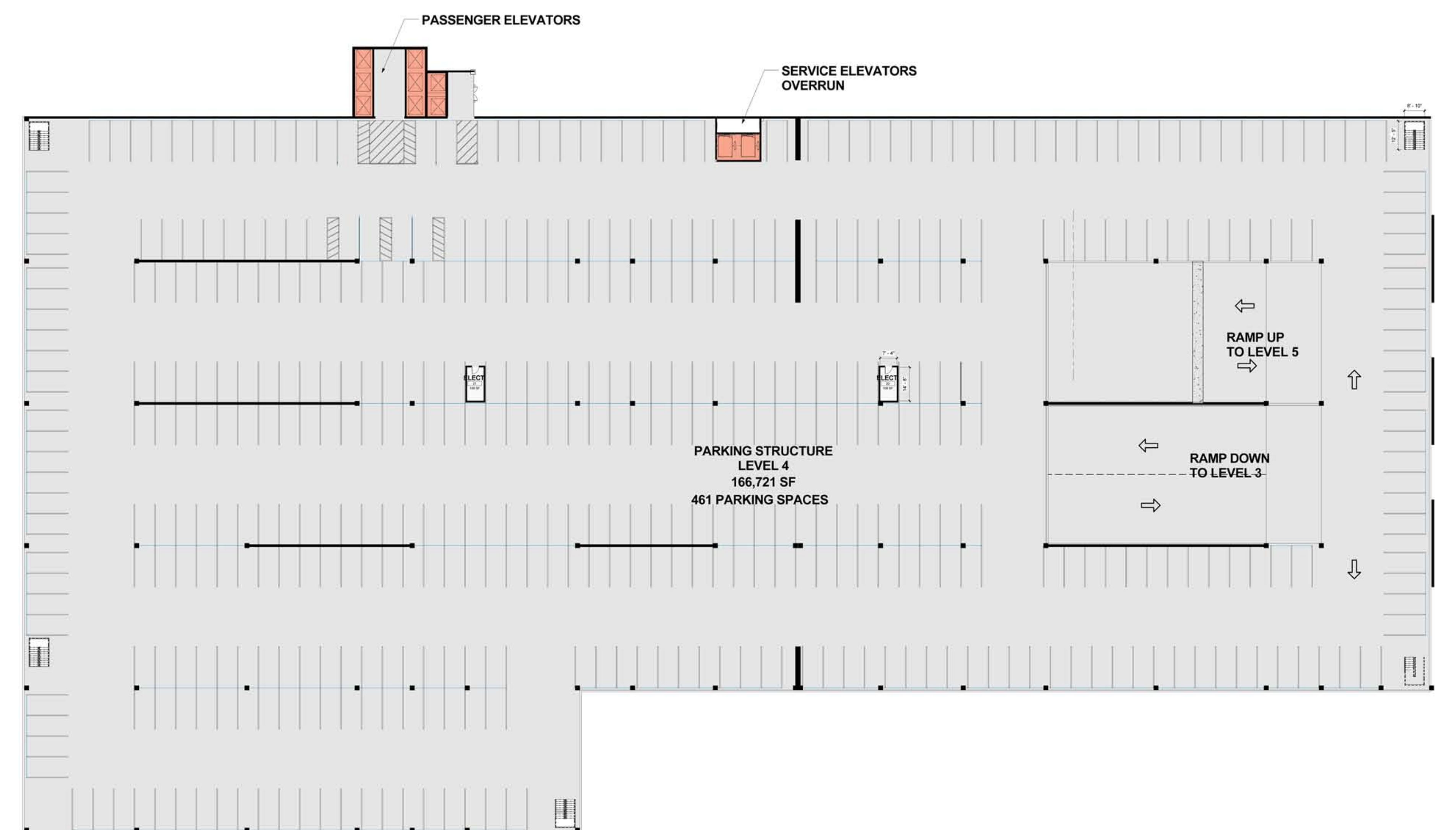


GARAGE LEVEL TWO

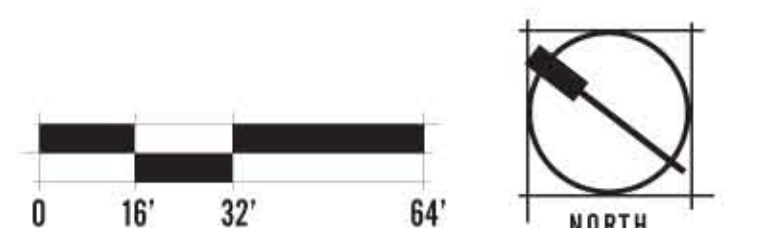
STRUCTURAL NOTE
 STRUCTURAL GRID INDICATED ON DRAWINGS IS FOR REFERENCE ONLY. FINAL STRUCTURAL LAYOUT TO BE DETERMINED BY DESIGN BUILD CONTRACTOR.

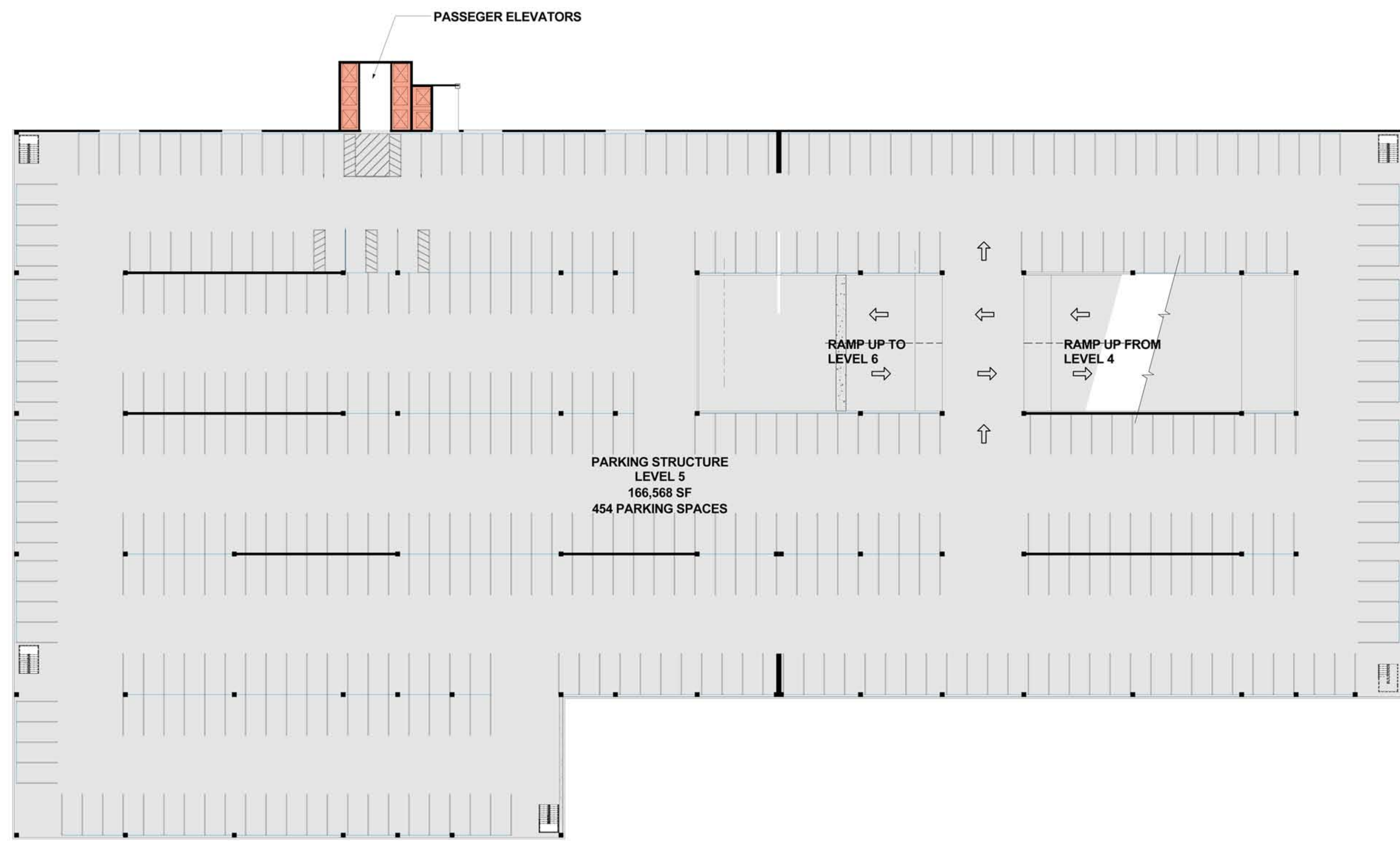


GARAGE LEVEL THREE

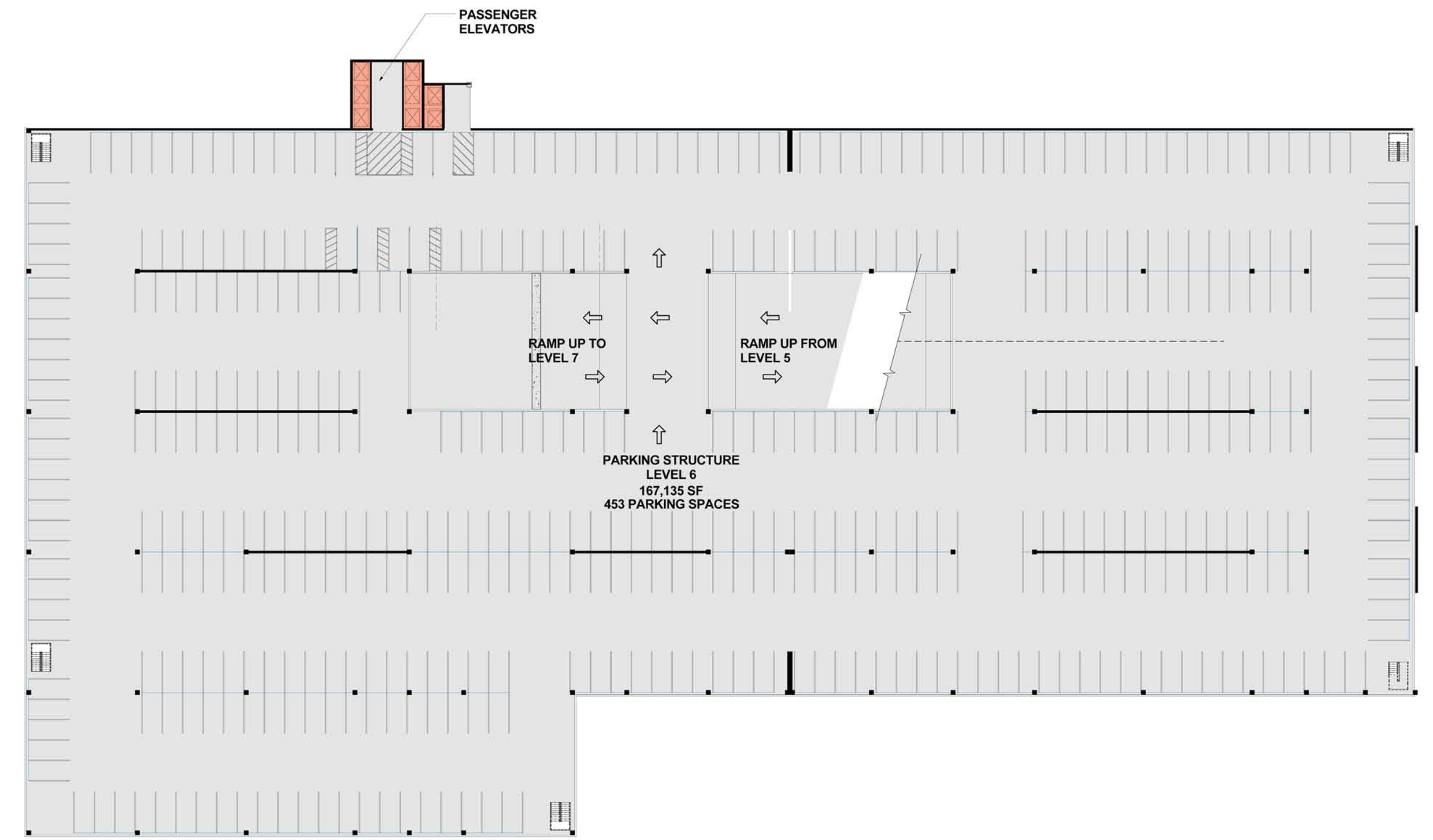


GARAGE LEVEL FOUR





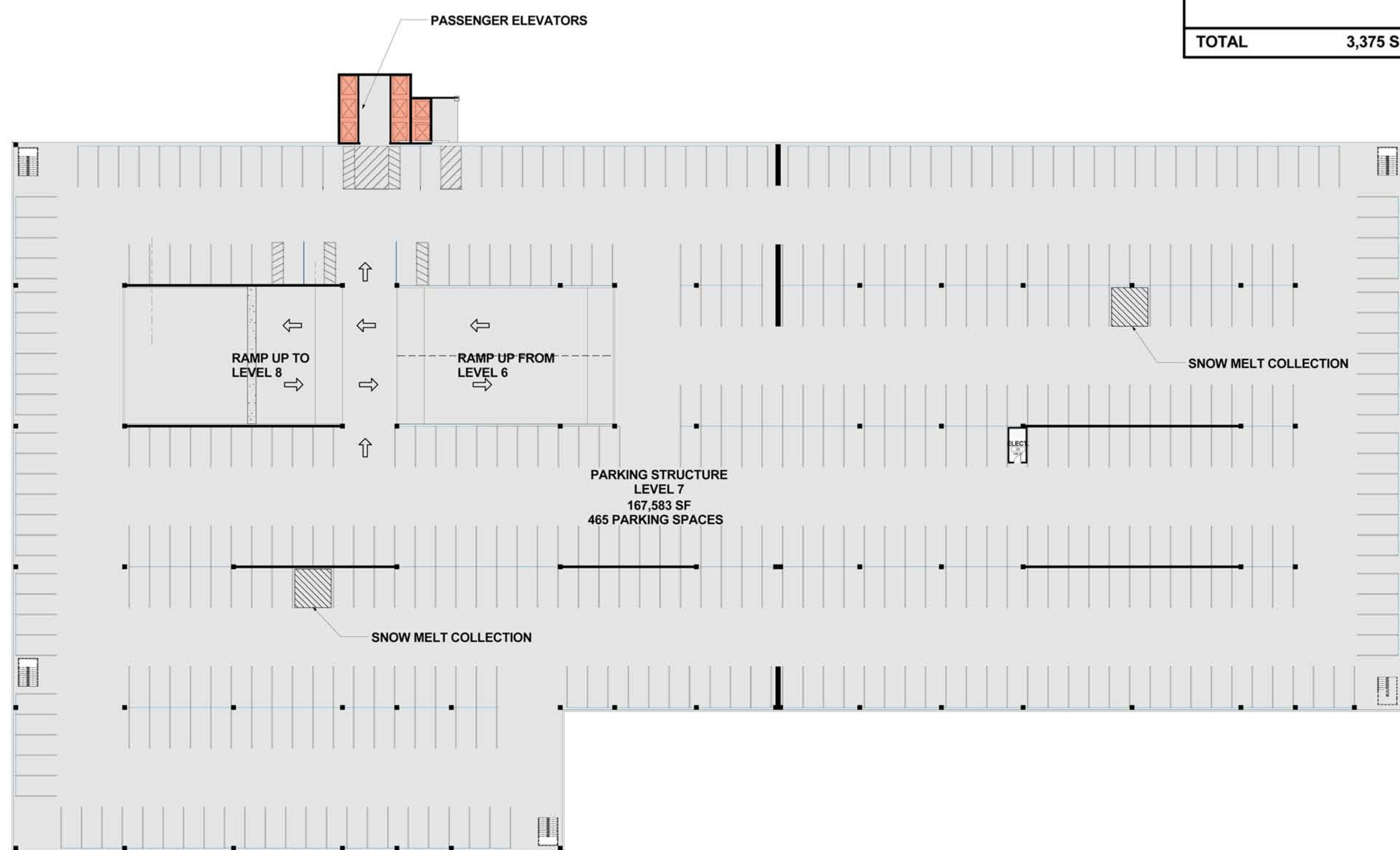
GARAGE LEVEL FIVE



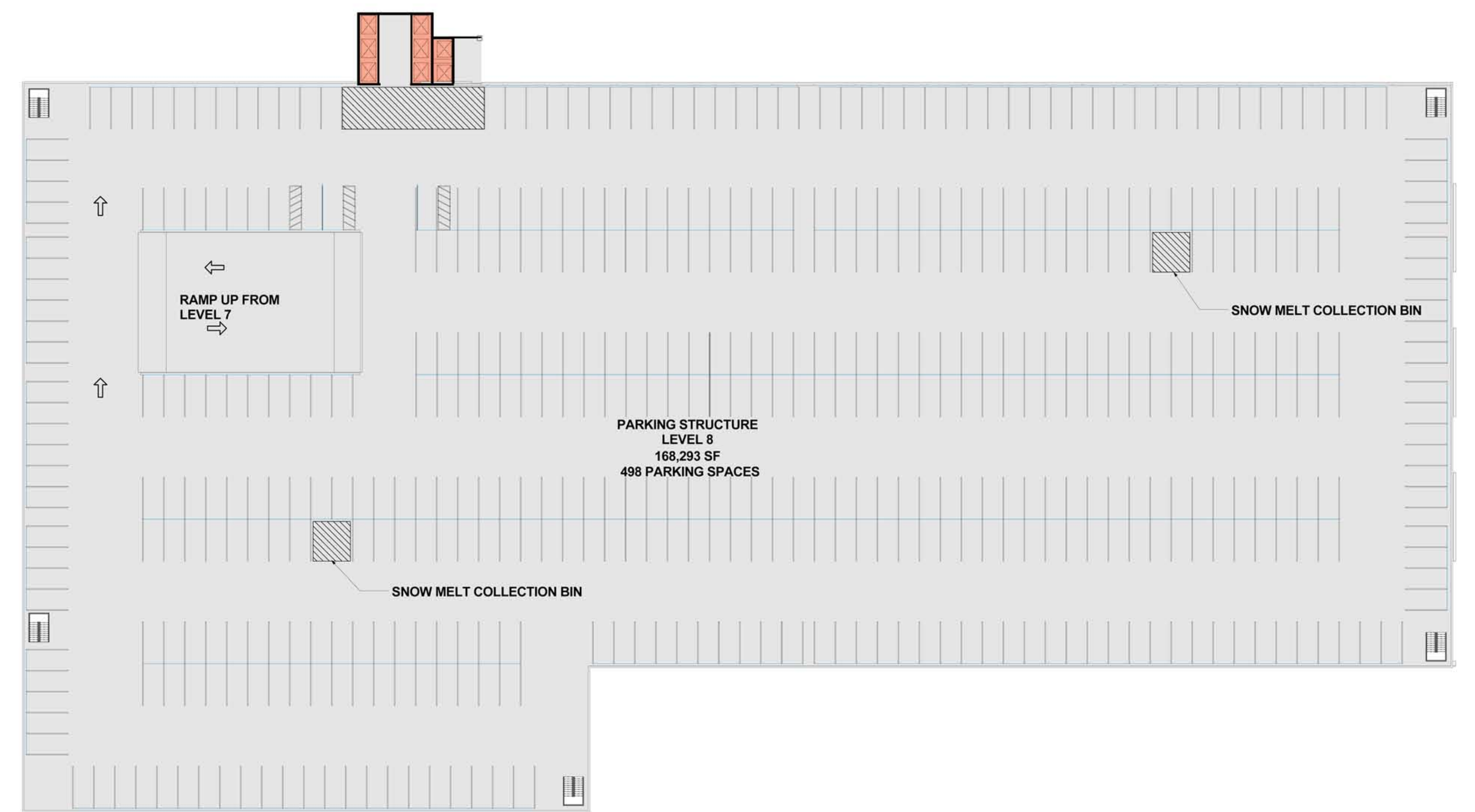
GARAGE LEVEL SIX

PARKING SUMMARY	
LEVEL 1	246 SPACES
LEVEL 2	382 SPACES
LEVEL 3	416 SPACES
LEVEL 4	461 SPACES
LEVEL 5	454 SPACES
LEVEL 6	453 SPACES
LEVEL 7	465 SPACES
LEVEL 8	498 SPACES
TOTAL	3,375 SPACES

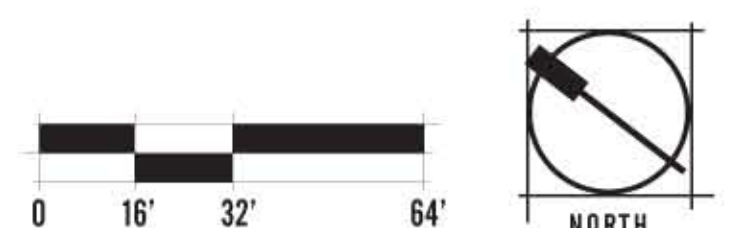
STRUCTURAL NOTE
STRUCTURAL GRID INDICATED ON DRAWINGS IS FOR REFERENCE ONLY. FINAL STRUCTURAL LAYOUT TO BE DETERMINED BY DESIGN BUILD CONTRACTOR.



GARAGE LEVEL SEVEN



GARAGE LEVEL EIGHT





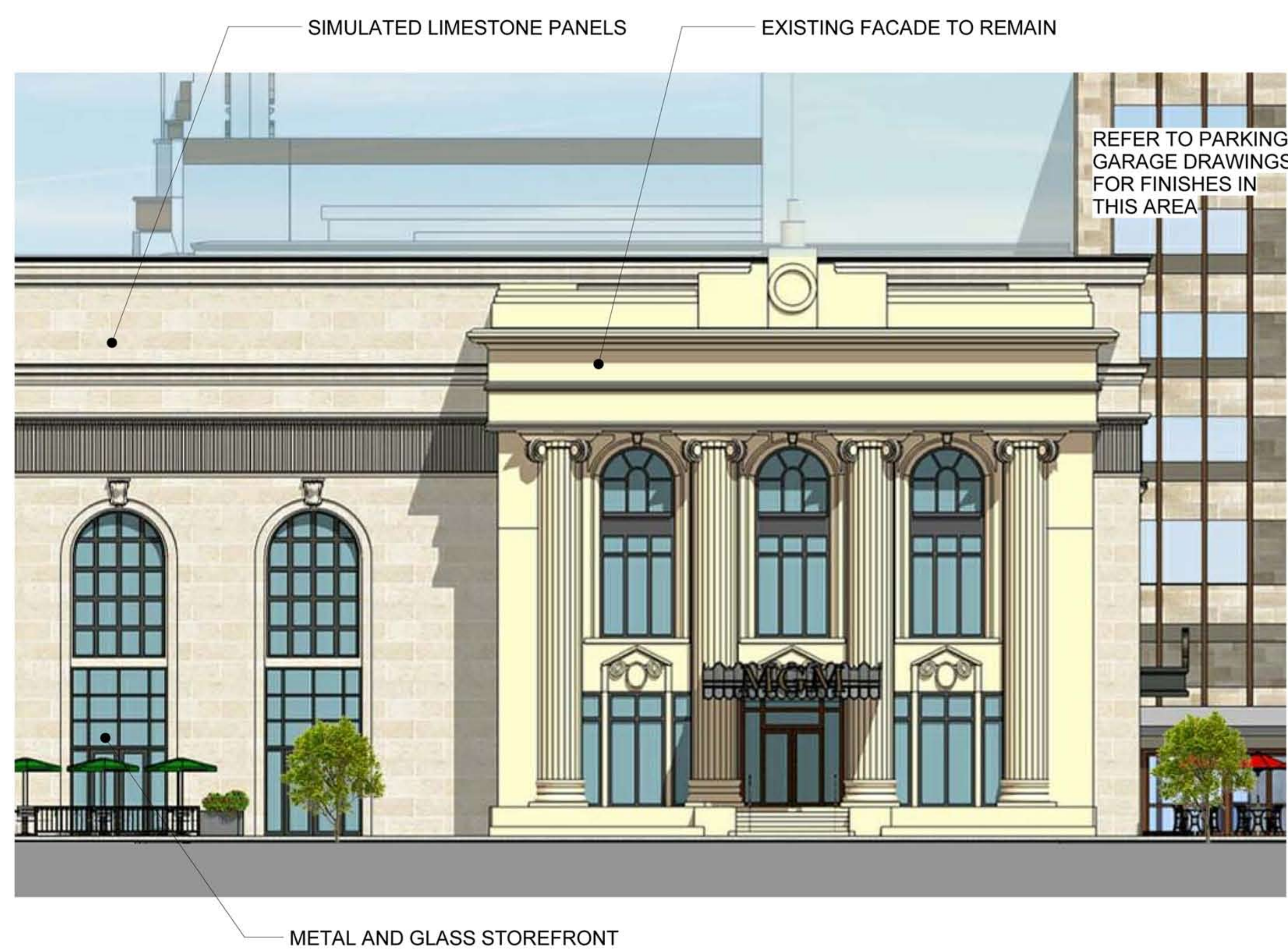








ENLARGED STATE STREET ELEVATION (PART
1 OF 2)
1/18" = 1'-0"



ENLARGED STATE STREET ELEVATION (PART
2 OF 2)
2/18" = 1'-0"



ENLARGED MAIN STREET ELEVATION (PART 1 OF 2)
1/8" = 1'-0"



ENLARGED MAIN STREET ELEVATION (PART 2)



ENLARGED HOWARD STREET ELEVATION
(PART 1 OF 2)
1/8" = 1'-0"



ENLARGED HOWARD STREET ELEVATION
(PART 2 OF 2)
1/8" = 1'-0"

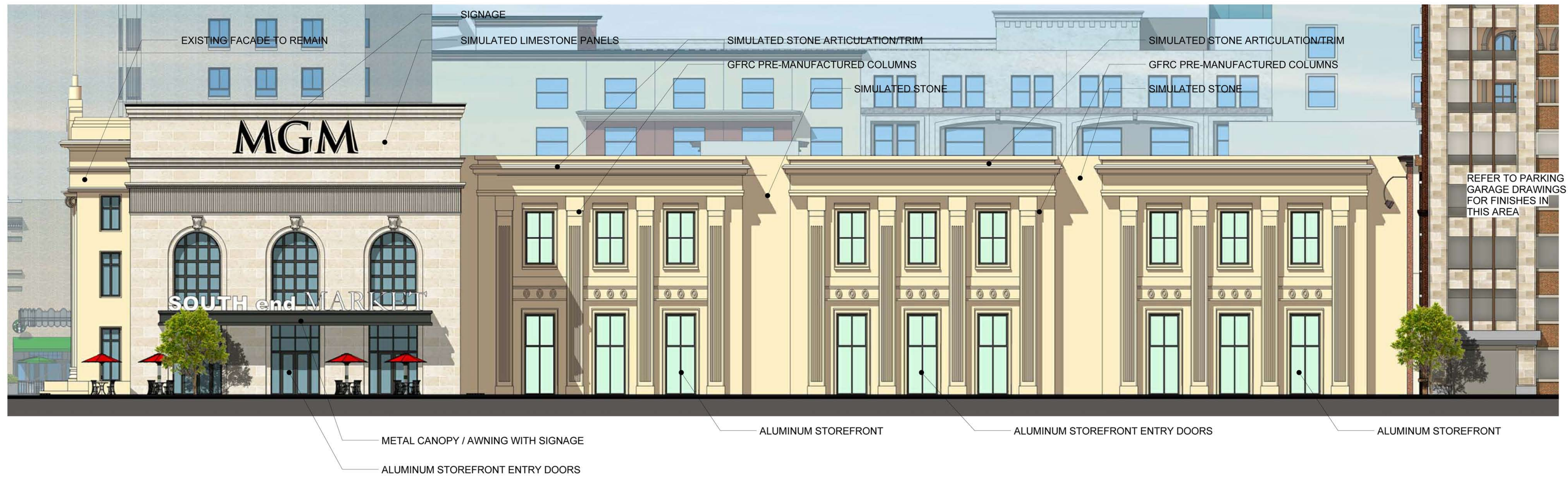


1 ENLARGED ENTERTAINMENT BLOCK ELEVATION (PART 1 OF 2)
1/8" = 1'-0"

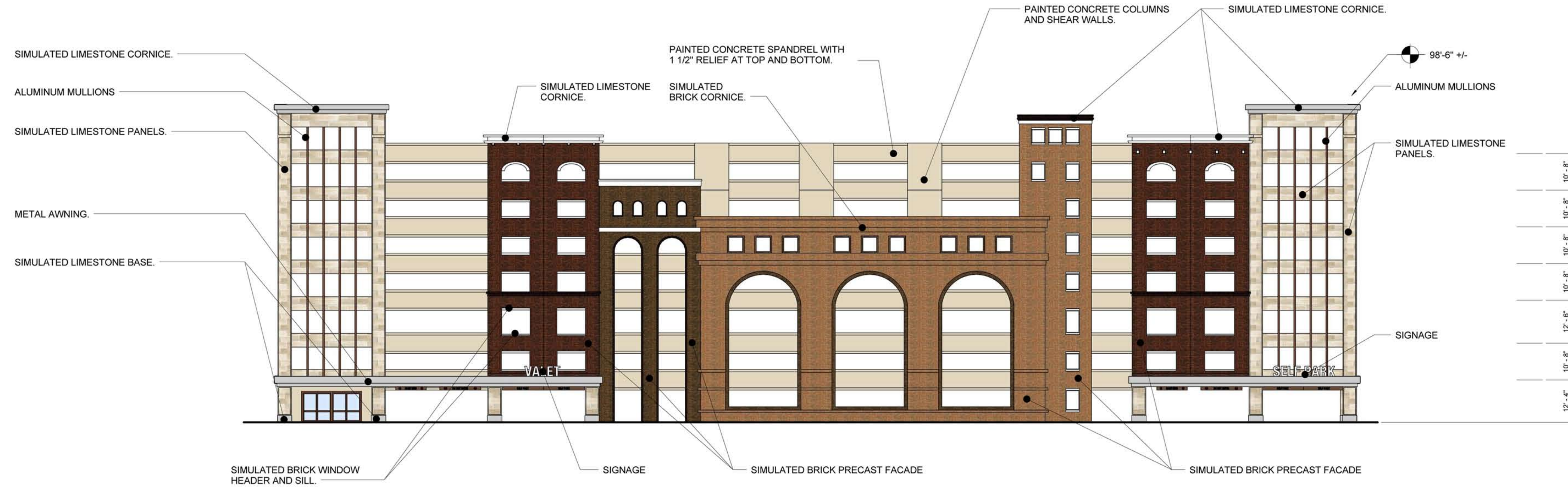


2 ENLARGED ENTERTAINMENT BLOCK ELEVATION (PART 2 OF 1)
1/8" = 1'-0"

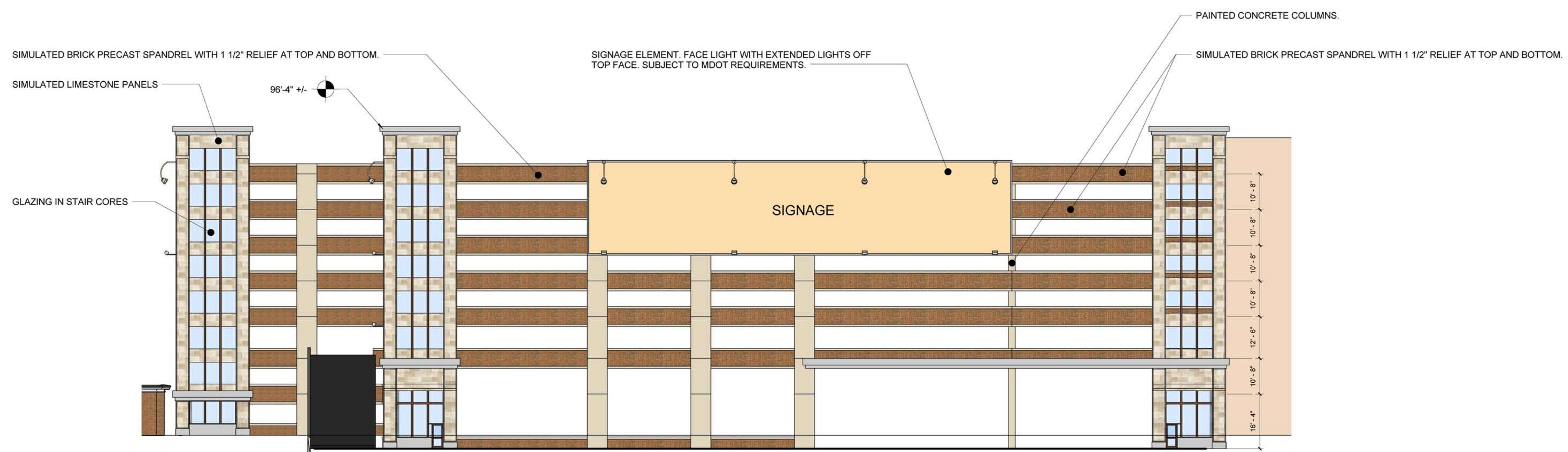




ENLARGED MGM WAY ELEVATION (PART 1 OF 1)
 1/8" = 1'-0"



20 PARKING STRUCTURE NORTH
ELEVATION
1/16" = 1'-0"



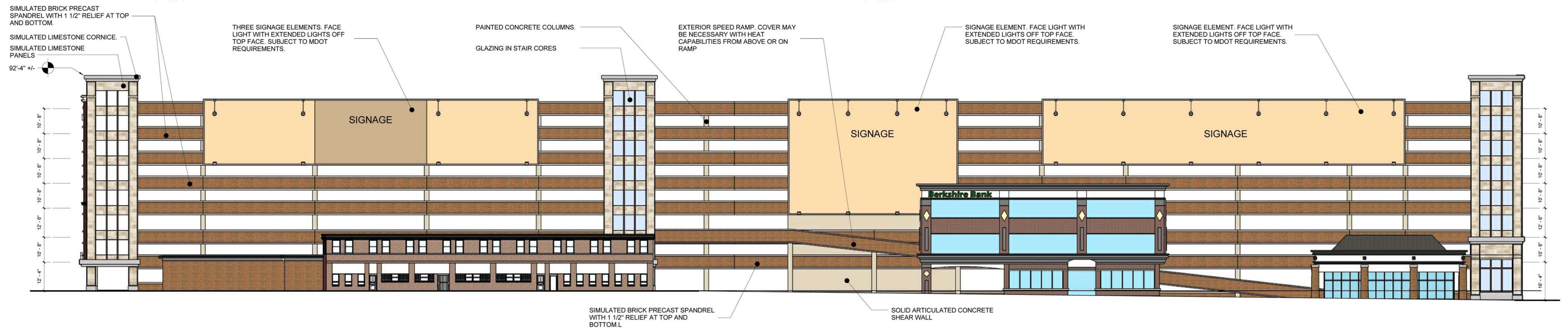
21 PARKING STRUCTURE SOUTH
ELEVATION
1/16" = 1'-0"



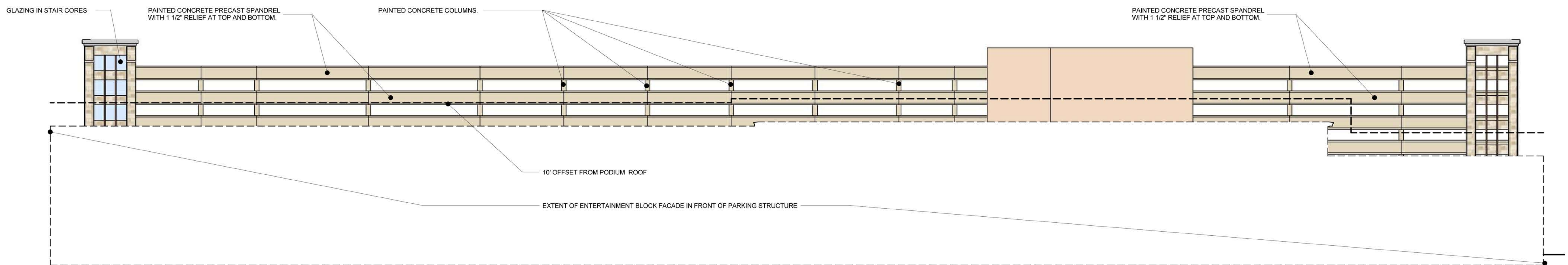
1B PERSPECTIVE 1
1" = 160'-0"



4B PERSPECTIVE 2
1" = 160'-0"

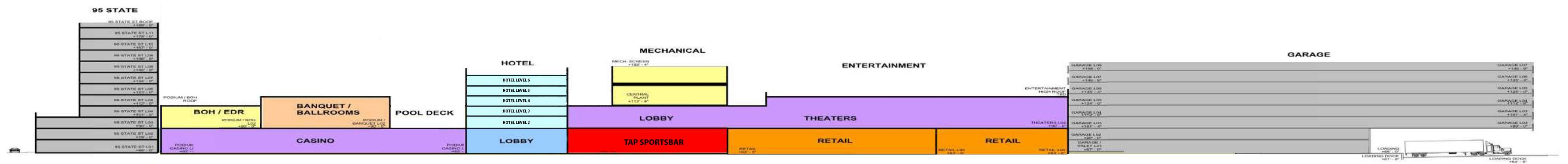


1D PARKING STRUCTURE WEST ELEVATION
1/16" = 1'-0"

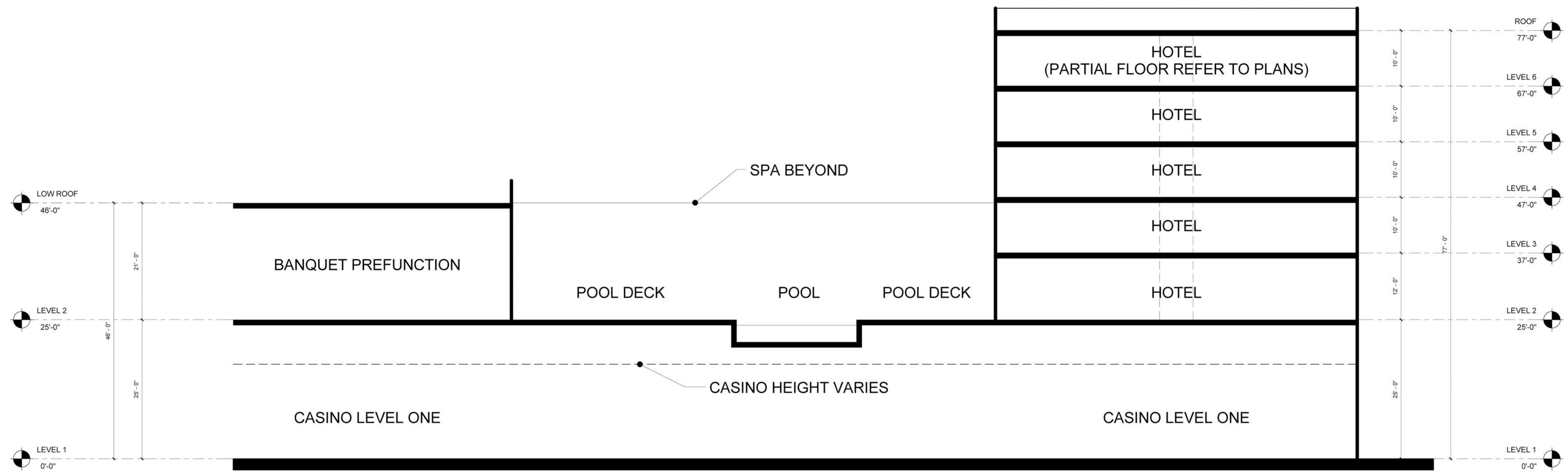


*ALL FACADES OVER METAL STUDS. FACADES FACING INSIDE OF GARAGE SHALL HAVE A PLASTER FINISH. ALL FACADES ARE OPEN TO GARAGE, NO GLAZING.

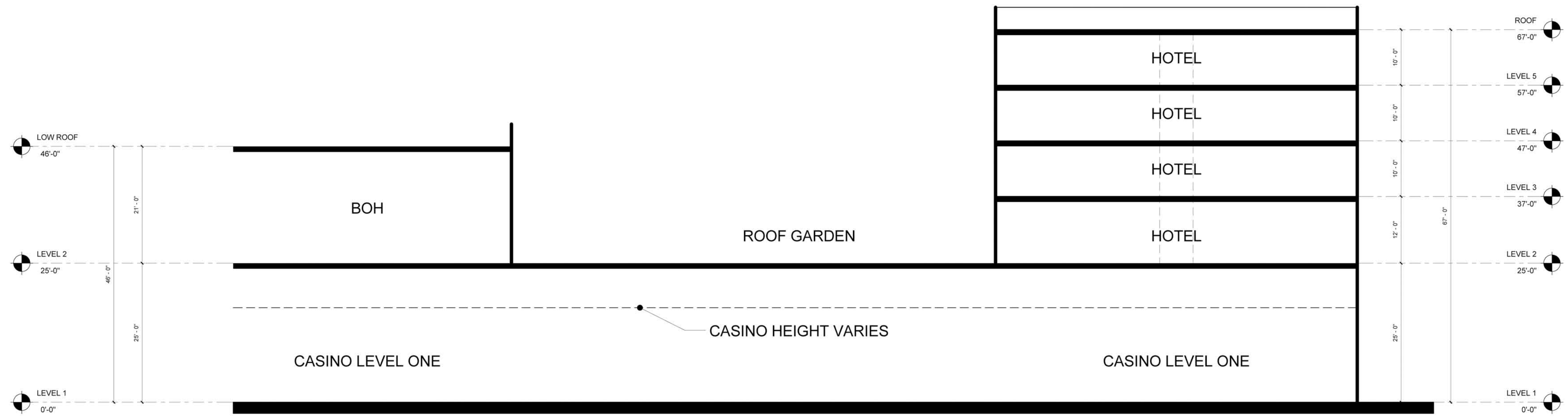
1F PARKING STRUCTURE EAST ELEVATION
1/16" = 1'-0"



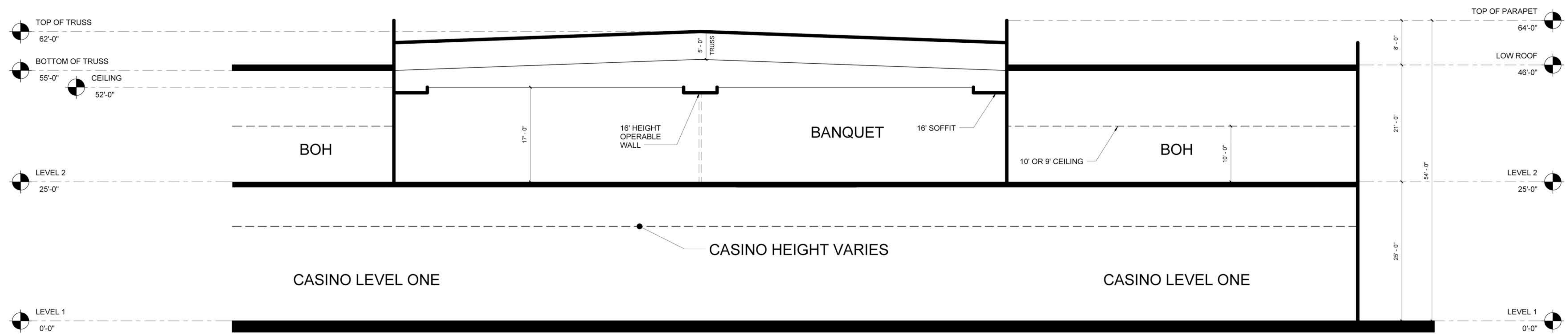
HEIGHT & MASSING DIAGRAM



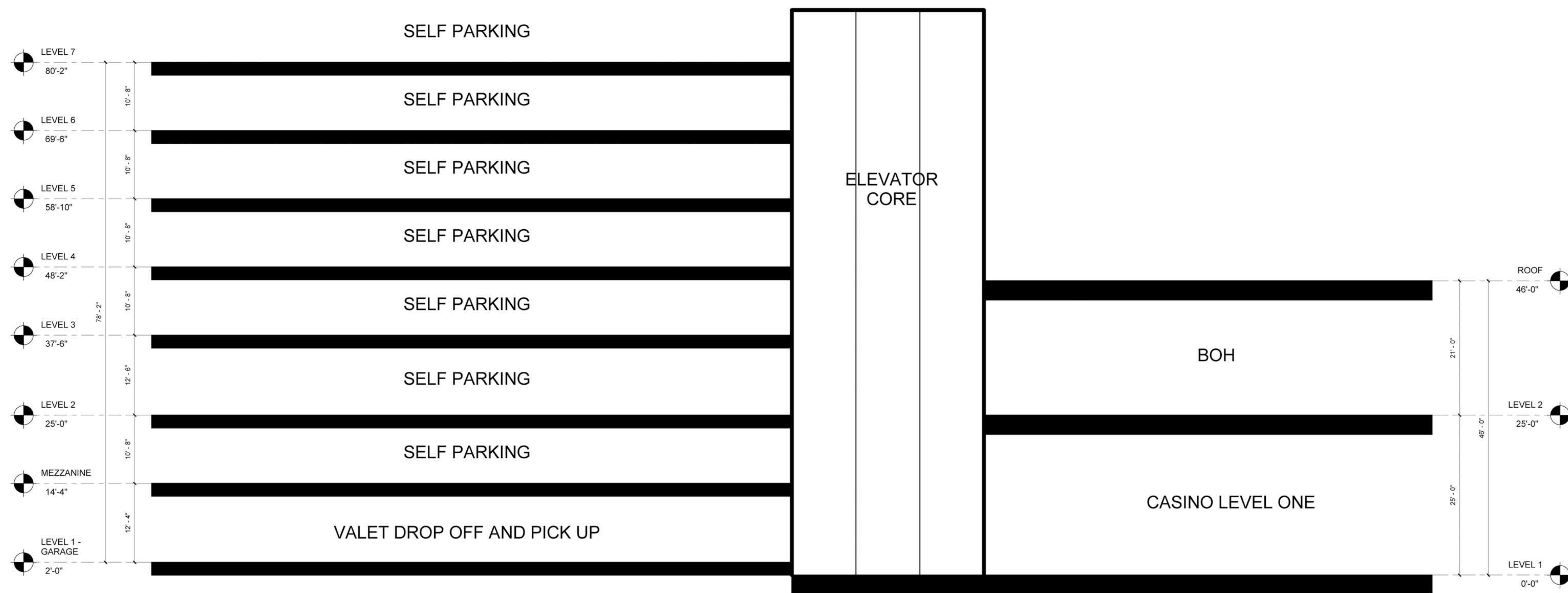
BUILDING SECTION THROUGH HOTEL AND POOL AREA
1C
1/8" = 1'-0"



BUILDING SECTION THROUGH HOTEL AND ROOF GARDEN
1F
1/8" = 1'-0"



1C BUILDING SECTION THROUGH BOH AND BANQUET SPACE
1/8" = 1'-0"



1F BUILDING SECTION THROUGH PARKING STRUCTURE
1/8" = 1'-0"

















